



October 28, 2020

## The City of Spruce Grove **ECONOMIC & BUSINESS DEVELOPMENT NEWS** *Keeping you informed!*

Our [Economic & Business Development Department's](#) newsletter keeps you informed about new development, new business, and other interesting happenings in our City. We will continue to provide updates on COVID-19 and business recovery resources. We make every effort to ensure the information on our [COVID-19 Resource Page](#) is current and relevant.

**Stay in the 'know' - Sign-up below!**

### **NEW DEVELOPMENTS**

New developments in Spruce Grove will be featured in each newsletter.

#### □ **ROZEN STEELWORKS INC.** □



[Rozen Steelworks Inc.](#) has moved into their new head office located at 90 Diamond Avenue in Spruce Grove. By combining their two lots and adding a 6,000SF two story office building, Rozen now operates out of 41,000SF across 8 acres. Rozen Steelworks are experts in pipe spool and structural fabrication and serves clients throughout Alberta and Western Canada.

Starting out in 2010 with one employee in a single-bay shop, Rozen Steelworks has advanced as a forward-thinking company to over fifty employees. Dedicated R&D has launched the company into the world of automation resulting in the optimization of fabrication processes and minimizing costs for their customers.

*“We saw products and services that companies were getting elsewhere and found a way to provide the same, with top quality and lower costs,”* adds Jonathan Rozendaal, President of Rozen Steelworks.

Rozen recently completed construction of a \$20M floating barge for the tailings ponds at Suncor’s new Fort Hills plant. This new breakthrough equipment will enable Suncor to spin tailings at high speeds while greatly reducing water consumption.

## □ TEMPORARY MANDATORY FACE COVERING BYLAW □

Spruce Grove has declared implementation of its Temporary Mandatory Face Covering Bylaw in response to being placed under a "watch" status by the Provincial Chief Medical Officer of Health. For more information, visit [www.sprucegrove.org/masks](http://www.sprucegrove.org/masks).

## ALBERTA'S RELAUNCH STRATEGY: STAGE 2 - CHANGES TO COVID-19 SUPPORT PROGRAMS

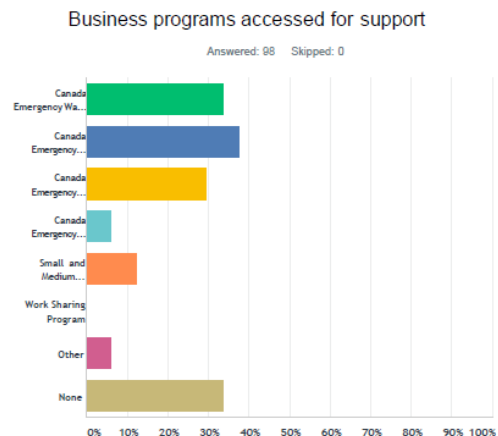
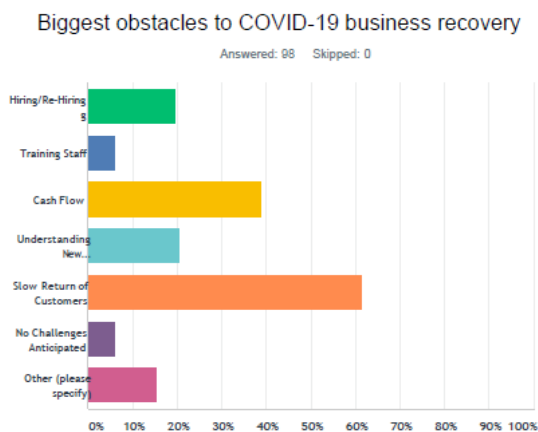
The *Government of Alberta's "Opening Soon - Alberta's Relaunch Strategy"* reflects which businesses re-opened during Stage 2 and what public health measures must be followed. Alberta Biz Connect offers [relaunch workplace guidance](#) to help businesses reopen and operate safely.

- **NEW: Canada Emergency Rent Subsidy (CERS)** - This new program provides commercial rent and mortgage support to qualifying organizations affected by the pandemic. Expenses of up to a maximum of 65% can be subsidized.
- **Changes to the Canada Emergency Response Benefit (CERB)** - The application process is closed. Eligible individuals will transition to one of the following:
  - **Employment Insurance (EI)** - Individuals have transitioned from CERB to EI to provide support to those who remain unable to work while introducing a new suite of temporary and taxable recovery benefits.
  - **Canada Recovery Benefit (CRB)** - Individuals not eligible for EI, can apply for income support through the CRB program. Individuals can receive \$1,000 for a 2-week period and may apply up to 13 periods between September 27, 2020 - September 25, 2021.
- **NEW: Innovation Employment Grant** - Alberta is expecting to launch this grant on January 1, 2021 as part of Alberta's Recovery Plan. Companies can receive up to 20% towards qualifying research and development expenditures.
- **EXTENDED: Canada Emergency Wage Subsidy (CEWS)** - This program has been extended to June 2021. The subsidy rate will depend on revenue drop. If the revenue drop was less than 30%, a business can still qualify. Employers who were hardest hit can apply for a higher amount. An employer with a 70% or greater revenue loss in a period would be eligible for a 65% wage subsidy.
- **EXTENDED: Canada Emergency Business Account (CEBA)** - The CEBA application program was extended to December 31, 2020. In addition to the \$40,000 interest-free loan, businesses and non-profits impacted by COVID-19 can now access an additional interest-free loan of up to \$20,000.

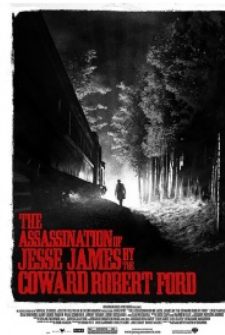
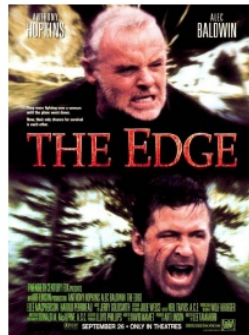
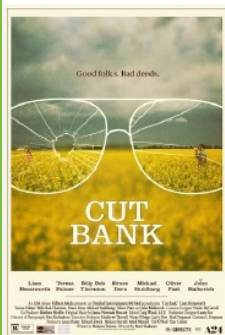
- **EXPANDED: Regional Relief and Recovery Fund (RRRF)** - The RRRF has expanded to provide additional interest-free repayable funding of up to \$1,000,000 for more Western small and medium-sized businesses.
- **Alberta Small and Medium Enterprise Relaunch Grant** - Businesses and non-profits can apply for funding of up to \$5,000 to help with the purchase of non-medical Personal Protective Equipment (PPE), and pay wages and rent.
- **CLOSED: Canada Emergency Response Benefit (CERB)** - The CERB application process is closed.
- **CLOSED: Canada Emergency Commercial Rent Assistance (CECRA)** - Applications are now closed.

## OTHER NEWS

- **EDAC** - City Council approved the members of the revamped Economic Development and Advisory Committee (EDAC) on October 13th. EDAC provides recommendations and advice on economic and business development issues. Click on the link to see the members appointed by Council.
- **Community Spirit Award** - Congratulations to [Cross Country Infrastructure Services](#) on receiving the 2020 Community Spirit Award from the *City of Spruce Grove*! They are being recognized for providing Personal Protective Equipment (PPE) in response to COVID-19. The award will be presented by the Mayor on October 28.
- **Building a Bold and Diverse Natural Gas Industry** - The *Alberta Government* has developed a new plan for diversifying and growing Alberta's natural gas industry. This plan will focus on opportunities involving hydrogen, petrochemical manufacturing, liquefied natural gas (LNG), plastics circular economy, and industrial demand.
- **Edmonton Trade Accelerator Program (TAP)** - This program helps businesses reach their global potential by providing access to industry experts to develop and execute a personalized market-entry export plan. Companies from Spruce Grove are eligible to apply.
- **Business Impact & Recovery Survey Results** - The *Greater Parkland Regional Chamber of Commerce* has released their survey results based on how our region's business community has been dealing with the impacts of COVID-19 and their path to recovery. The survey closed on October 6, 2020.



## Did you know that many movies and TV series are filmed in the Edmonton area?



[Alberta Film's](#) new online resource directory enables the screen-based industry to showcase their skills and services to domestic, national, and international screen-based industry representatives. Production staff and technical crew, producers and production companies, and other industry professionals can [register here](#). The [Edmonton Screen Industries Office \(ESIO\)](#) is working with Alberta Film to showcase regional locations on a new online photo library program.

### SPRUCE GROVE'S SUPPORT LOCAL CAMPAIGN



The City of Spruce Grove has launched our [Support Local campaign](#) to encourage residents to shop local and to support businesses. Look for these messages on the Highway 16A digital billboards.

### CHAMBER BUSINESS AWARDS OF DISTINCTION



The Chamber Business Awards of Distinction celebrates businesses in the Tri-Region. The finalists have been announced and you can check them out [here](#).

## SIGN UP FOR OUR NEWSLETTER!

To learn more about economic and business development in Spruce Grove, visit our website at [InvestSpruceGrove.ca](http://InvestSpruceGrove.ca). If you have any questions, please e-mail a team member at [Invest@SpruceGrove.org](mailto:Invest@SpruceGrove.org).

Thank you for your engagement.  
Together, we play an important role in keeping our community healthy and safe.

From our team to yours,  
*Dave, Karla, Jamie-Lynn, & Anika*

**SHARE OUR NEWSLETTER THROUGH SOCIAL MEDIA:**

